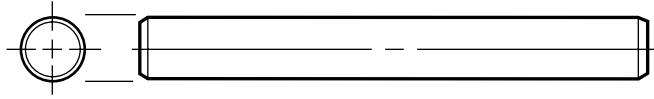


# Nd:YAG Rod Repolishing & (Er:YAG & CTH:YAG)



**Specifications:**

Flatness ..... 1/10 @ 632.8nm  
 Surface Quality ..... 10/5 or better  
 Parallelism ..... Less than 10 seconds  
 Perpendicularity ..... Less than 5 minutes  
 Clear Aperture ..... Central 95%



	Flat & Parallel	Radius	Tilt	Brewster/Brewster
<b>Diameter</b>				
2.00 mm (.078")	YF02	YR02	YT02	YB02
3.00 mm (.118")	YF03	YR03	YT03	YB03
4.00 mm (.157")	YF04	YR04	YT04	YB04
5.00 mm (.197")	YF05	YR05	YT05	YB05
6.00 mm (.234")	YF23	YR23	YT23	YB23
6.35 mm (.250")	YF25	YR25	YT25	YB25
7.00 mm (.275")	YF26	YR26	YT26	YB26
8.50 mm (.345")	YF33	YR33	YT33	YB33
9.00 mm (.345")	YF35	YR35	YT35	YB35
9.52 mm (.375")	YF37	YR37	YT37	YB37
10.0 mm (.394")	YF39	YR39	YT39	YB39